



FURNITURE
COLLECTION

2021

CONTENTS & INFORMATION

THE EXECUTIVE RANGE

- 4 nero desks & pedestals
- 5 nero conference & meeting
- 6 alto desking
- 7 alto storage & display
- 8 alto boardroom & meeting

DESKING & PEDESTALS

- 10 single bench desks
- 11 back to back bench desks
- 12 mix & match singles
- 13 bench pedestals
- 14 electric height adjustable
- 15 - 16 endurance & accessories
- 17 endurance pedestals
- 18 desk mounted screens
- 19 acrylic screens

BOARDROOM & MEETING

- 21 fliptop tables
- 22 endurance boardroom
- 23 white boardroom

STORAGE & DISPLAY

- 25 bookcases & cupboards
- 26 white cupboards
- 27 filing cabinets
- 28 tambour cabinets

RECEPTION FURNITURE

- 30 'L' shaped counters
- 31 curved modular counters
- 32 white gloss counters
- 33 glass coffee tables
- 34 chairs & sofas

CHAIRS & SEATING

- 36 - 38 ergonomic seating
- 39 - 41 mesh executive & operators
- 42 - 44 executive, visitors & meeting
- 45 multi-purpose
- 46 - 47 endurance operators & stacking

Direct Delivery

We offer a UK mainland direct delivery service (kerbside) to your client charged at £100.00. Additional costs will be incurred for extreme postcodes.

Minimum Order

Any order(s) combined must reach our minimum order value of £350.00 to qualify for delivery to your ware - house. We do not deliver under this amount.

Installation

Our Installation services are priced separately and are quoted based on item type and quantities, please contact us for a quote.

Shortfalls & Damaged Items

Shortfalls and damages must be reported and notified in writing by email within 24 hours of receiving an order.

THE EXECUTIVE RANGE

make an executive decision with our premium selection
of desking, storage & conference tables



Nero Executive

DESKS & PEDESTALS



Chamfered Edge Design



Discreet Handleless Cupboard

Additional Notes

- 25mm Anthracite Tops with Chamfered Edging
- Chromed Metal Legs & Feet Across Full Range
- Brushed Metal Cable Port (NER-190DK)
- Adjustable Shelving & Filing to Return Unit
- Modern Hanging Modesty Panels
- Set of Two Hinged Storage Keys as Standard
- Soft Closing Hinges To All Doors
- Metal to Metal Fixings Throughout

Available Finishes



Anthracite (AN)



NER-200DK
2.0m rectangular Executive desk with modesty panel
W2000 x D900 x H750



NER-190DK/L
1.9m corner Executive desk with left hand return unit
W2150 x D1850 x H750



NER-190DK/R
1.9m corner Executive desk with right hand return unit
W2150 x D1850 x H750



NER-MP
Three drawer under-desk Executive mobile pedestal
W400 x D500 x H625



NER-120CB
1.2m Executive double door storage cupboard
W800 x D450 x H1200



NER-FC2D
Two drawer Executive filing cabinet (file bars included)
W487 x D450 x H800

Nero Executive

CONFERENCE & MEETING



Additional Notes

25mm Anthracite Tops with Chamfered Edging

NER-300 & 400 Tops Supplied in Halves

Chromed Metal Legs & Feet Across Full Range

Adjustable Shelving to Credenza

Set of Two Storage Keys as Standard

Soft Closing Hinges To All Doors

Brushed Metal Comms Box (electrics not supplied)



Comms Box (above)



Comms Box (underneath)



Available Finishes



Anthracite
(AN)



NER-180BT

Executive 1.8m conference table with comms box
W1800 x D900 x H750



NER-240BT

Executive 2.4m conference table with comms box
W2400 x D1200 x H750



NER-300BT

Executive 3.0m conference table with comms boxes
W3000 x D1200 x H750



NER-400BT

Executive 4.0m conference table with comms boxes
W4000 x D1200 x H750



NER-100RT

1.0m Executive circular table with tri-legged base
D1000 x H750



NER-180CR

1.8m two door Executive credenza unit
W1800 x D450 x H800

Alto Executive

DESKING



Additional Notes

30mm Tops with 3mm ABS Edging

Metal to Metal Fixings Throughout

Brushed Metal Cable Ports

Return Units Allow Left or Right Placement

Ball Bearing Runners to Drawers

Bottom Drawer File Bars Included (MP)

Brushed Metal Curved Handles

Dual Motor Electric Height Adjustable Desk

Four Memory Settings with Digital Display

Superior Stability with Two Column Lift

Available Finishes



American Black
Walnut (ABW)



EXEC-HAF200

2.0m Executive Bow Fronted electric height adjustable desk
W2000 x D900 x H730 - 1130



EXEC-200

2.0m bow fronted Executive desk with panel ended legs
W2000 x D900 x H730



EXEC-180

1.8m bow fronted Executive desk with panel ended legs
W1800 x D900 x H730



EXEC-RCM180

1.8m rectangular Executive desk with panel ended legs
W1800 x D900 x H730



EXEC-RU

Executive universal desk return unit
W900 x D600 x H730



EXEC-FP

Two drawer Executive fixed pedestal (for EXEC-RU only)
W400 x D450 x H300

Alto Executive

STORAGE & DISPLAY



Additional Notes

Adjustable Shelving on Interlocking Pins

Set of Two Hinged Keys with Every Unit

Soft Closing Hinges To All Doors

Solid 18mm Back Panels

Levelling Feet to All Units

Brushed Metal Curved Handles

Metal to Metal Fixings Throughout

Foolscap & A4 filing (EXEC-2DSF)

Available Finishes



American Black
Walnut (ABW)



EXEC-SC730

730mm high Executive cupboard
with one adjustable shelf
W800 x D450 x H730



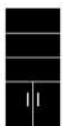
EXEC-SC12

1.2m high Executive cupboard
with two adjustable shelves
W800 x D450 x H1200



EXEC-SC18

1.8m high Executive cupboard
with four adjustable shelves
W800 x D450 x H1800



EXEC-BC/SC18

1.8m high Executive combination
cupboard with three adj. shelves
W800 x D450 x H1800



EXEC-2DSF

730mm high Executive two
drawer side filing cabinet
W900 x D600 x H730



EXEC-MP

Three drawer Executive under
desk mobile pedestal
W438 x D600 x H680

Alto Executive

BOARDROOM & MEETING



30mm Arrowhead Base



Four Door Credenza Unit

Additional Notes

Credenza Supplied with Keys & Adj. Shelves

Soft Closing Hinges to All Doors

30 - 36mm Conference Tops with Slab Legs

EXEC-BDT360 & 400 Tops Supplied in Halves

Solid Modesty, Leg and Back Panels

Levelling Feet to All Units

Brushed Metal Curved Handles

Metal to Metal Fixings Throughout

Available Finishes



American Black
Walnut (ABW)



EXEC-BDT240

2.4m Executive conference table
with 30mm top & 25mm legs
W2400 x D1200 x H730

EXEC-BDT360

3.6m Executive conference table
with 36mm top & 30mm legs
W3600 x D1200 x H730

EXEC-BDT400

4.0m Executive conference table
with 36mm top & 30mm legs
W4000 x D1200 x H730

EXEC-RT120

1.2m Executive meeting table
30mm top & arrowhead base
D1200 x H730

EXEC-CRED180

1.8m Executive four door
credenza storage unit
W1800 x D450 x H730

DESKING & PEDESTALS

a range of sizes, shapes & styles tailor-made to charm
and endure any office environment



Bench Desks

SINGLE STARTER & ADD-ON



Additional Notes

Stand-alone & Add-on Bench Desking

25mm Chamfered Edge White Tops

Modern Scalloped Cable Tidy

Metal 'A' Frame End & Shared Leg

Metal to Metal Fixings Throughout

Add-ons Allow Extension to Bench Starter

Desk Mounted Screens Available (Page 18)

Available Frame & Leg Finishes



Row of 3 x 1200 desk example



SDS-1280

SDA-1280

SDA-1280

SDS-1280

1.2m single bench desk
(starter / freestanding unit)
W1200 x D800 x H730

SDS-1480

1.4m single bench desk
(starter / freestanding unit)
W1400 x D800 x H730

SDS-1680

1.6m single bench desk
(starter / freestanding unit)
W1600 x D800 x H730

SDA-1280

1.2m single bench desk
(add-on unit)
W1200 x D800 x H730

SDA-1480

1.4m single bench desk
(add-on unit)
W1400 x D800 x H730

SDA-1680

1.6m single bench desk
(add-on unit)
W1600 x D800 x H730

Bench Desks

BACK TO BACK STARTER & ADD-ON



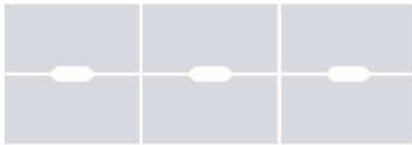
Additional Notes

- Stand-alone & Add-on Bench Desking
- 25mm Chamfered Edge White Tops
- Designer Scalloped Cable Tidy
- Metal 'A' Frame End & Inset Shared Leg
- Metal to Metal Fixings Throughout
- Add-ons Allow Extension to Bench Starter
- UWT Spans Over Both Tops on One Unit

Available Frame & Leg Finishes



Bank of 3 x 1200 back to back desk example



BBS-1280 BBA-1280 BBA-1280

BBS-1280

1.2m double bench desk
(starter / freestanding unit)
W1200 x D1600 x H730



BBS-1480

1.4m double bench desk
(starter / freestanding unit)
W1400 x D1600 x H730



BBS-1680

1.6m double bench desk
(starter / freestanding unit)
W1600 x D1600 x H730



CT

Universal cable tray
(for SDS & SDA desks)
W1000 x D60 x H100



BBA-1280

1.2m double bench desk
(add-on unit)
W1200 x D1600 x H730



BBA-1480

1.4m double bench desk
(add-on unit)
W1400 x D1600 x H730



BBA-1680

1.6m double bench desk
(add-on unit)
W1600 x D1600 x H730



UWT

Width adjust. cable tray
(for BBS & BBA desks)
W1050 - 1450 x D180



Bench Desks

MIX & MATCH SINGLES



White Top with Black Leg



Light Oak Top with White Leg

Additional Notes

25mm Tops with Modesty Panel

Adaptable in Busy Work Environments

Metal 'Gate Leg' Available in Three Colours

Oval Porthole Covers to Match Leg Colour

Metal to Metal Fixings Throughout

No Underframe for Quicker Installation

Endurance Pedestal Colours Available (Pg 17)

Available Top Finishes



Light Oak
(LO)



White
(W)

Available Frame & Leg Finishes



Black
(BLK)



Silver
(S)



White
(W)

OI-1280

1.2m rectangular mix
& match bench desk
W1200 x D800 x H730

OI-1480

1.4m rectangular mix
& match bench desk
W1400 x D800 x H730

OI-1680

1.6m rectangular mix
& match bench desk
W1600 x D800 x H730

CT

Universal Black metal
cable tray
W1000 x D60 x H100

Bench Pedestals

METAL & MFC

Additional Notes

New Design with Enhanced Features

Bevelled Edge to All Drawers

Ball-Bearing Runners as Standard

Supplied with Two Hinged Keys

Anti-tilt Mechanism

Pen Tray Included (excl. NWP)

Pre-fitted Locking Castors

Adjustable Filing Bars Supplied

Available Finishes



Black
(BLK)



Silver
(S)



White
(W)



Pencil Tray Included



Bottom Filing with Adjustable Bars



NWP

White MFC flush fronted three
drawer mobile pedestal
W400 x D510 x H650



3DRW-SLIM

Metal flush fronted three
drawer slim mobile pedestal
W300 x D520 x H600



3DRW

Metal flush fronted three
drawer mobile pedestal
W390 x D520 x H600

Height Adjustable Desks

ELECTRIC ERGOLIFT



Simple Up & Down Operation



Width Adjustable Frame



Dual Column Lift



Subtle Motor Casing



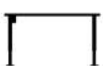
Additional Notes

- Simple Two Button Operation (Up & Down)
- Electric Powered Frame, No Crank Handles
- Unmatched Stability with Dual Column Legs
- Single Motor Mechanism with 160kg Lift
- 80kg Lifting Capacity Per Leg
- Smooth & Quiet Ascend / Descend
- Infinite Height Increments
- Cable Management Available
- Accepts 1200 to 1800mm Tops
- Frame Height Ranges from 680 to 1130mm
- (10%) 2 Min On / 18 Min Off Duty Cycle

Available Top Finishes



Available Frame Finishes



HAF
Electric height adjustable frame only
(width adjustable)
W1150 - 1600 x D620 x H680 - 1130



HAT120
1.2m rectangular electric height
adjustable desk
W1200 x D800 x H705 - 1155



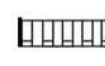
HAT140
1.4m rectangular electric height
adjustable desk
W1400 x D800 x H705 - 1155



HAT160
1.6m rectangular electric height
adjustable desk
W1600 x D800 x H705 - 1155



HAT180
1.8m rectangular electric height
adjustable desk
W1800 x D800 x H705 - 1155



CT
Universal Black metal
cable tray
W1000 x D60 x H100

Endurance Desks

RECTANGULAR DESKING

Additional Notes

25mm Top & Modesty with 3mm ABS Edging

Metal to Metal Fixings Throughout

Cam & Pin Construction

Double Strut Cantilever Legs

Modern Oval Silver & Black Porthole Cover

FIRA Certified Workstations

Levelling Feet to All Units

Blue & Black Fabric Screens Available (Page 18)

Matching Pedestals Available (Page 17)

Available Top Finishes



Beech
(B)



Light Oak
(LO)



25mm Tops & 3mm ABS Edging



80mm Port Hole Cover



Double Strut Cantilever Legs



Metal to Metal Fixings Throughout



RCM100-6
1.0m rectangular desk
with cantilever legs
W1000 x D600 x H730



RCM100-8
1.0m rectangular desk
with cantilever legs
W1000 x D800 x H730



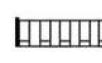
RCM120
1.2m rectangular desk
with cantilever legs
W1200 x D800 x H730



RCM140
1.4m rectangular desk
with cantilever legs
W1400 x D800 x H730



RCM160
1.6m rectangular desk
with cantilever legs
W1600 x D800 x H730



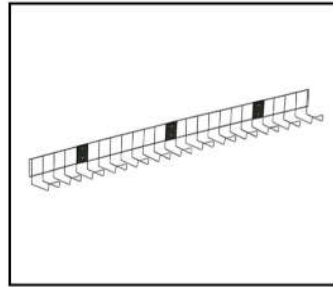
CT
Universal Black metal
cable tray
W1000 x D60 x H100

Endurance Desks

RADIAL DESKING & ACCESSORIES



Spinal Cable Tidy



Universal Cable Tray

Additional Notes

25mm Top & Modesty with 3mm ABS Edging

Metal to Metal Fixings Throughout

Double Strut Cantilever Legs

Modern Oval Silver & Black Porthole Cover

FIRA Certified Workstations

Levelling Feet Throughout

Check QI Comptability Before WC Purchase

Blue & Black Fabric Screens Available (Page 18)

Matching Pedestals Available (Page 17)

Available Top Finishes



Beech
(B)



Light Oak
(LO)



LDM160

1.6m left hand cantilever
radial / crescent desk
W1600 x D1200/ D800
/600 x H730



RDM160

1.6m right hand cantilever
radial / crescent desk
W1600 x D1200/ D800
/600 x H730



LDM180

1.8m left hand cantilever
radial / crescent desk
W1800 x D1200/ D800
/600 x H730



RDM180

1.8m right hand cantilever
radial / crescent desk
W1800 x D1200/ D800
/600 x H730



PT

Black pedestal pen tray
(does not fit CMP or SLIM)
W360 x D165 x H30



WC

Qi wireless phone charger
(Black or White)
D88 x H6



CR

Universal spinal cable
tidy (Silver Only)
D60 x H750



CT

Universal Black metal
cable tray
W1000 x D60 x H100



Endurance Pedestals

MFC MOBILE & DESK HIGH

Additional Notes

- Solid Colour Coordinated Box Drawer
- Concealed Mobile Castors (CMP & MP)
- Ball Bearing Runners to All Drawers
- Metal 'D' Shaped Handles
- Set of Two Hinged Keys as Standard
- Adjustable Filing Bars Included
- Levelling Feet (DHP only)
- Pen Tray Available as an Optional Extra

Available Finishes



Silver Metal Handles



Ball Bearing Runners



CMP
Two drawer flush fronted contract mobile pedestal
W404 x D510 x H595

MP
Three drawer 680mm high mobile pedestal
W438 x D600 x H680

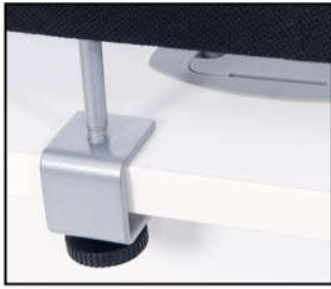
DHP438
Three drawer 730mm high pedestal (600 deep)
W438 x D600 x H730

DHP438-800
Three drawer 730mm high pedestal (800 deep)
W438 x D800 x H730

PT
Top drawer pencil tray (does not fit CMP)
W360 x D165 x H30

Desk Mounted Screens

JET BLACK & ROYAL BLUE FABRIC



Individual Desk 'DMS' Clamp



Back to Back Desk 'DT' Clamp

Additional Notes

Clamps Included with Every Screen

DMS Clamp - For Individual Desking

DT Clamp - For Back to Back Desking

Silver Metal Trim As Standard

DMS770 Not Compatible with Bench Desks

Chrome Finished Screen & Post Caps

Two, Three or Four Way Linking (LP)

For Use Across All Desking Ranges



Available Fabric Colours



Jet Black
(BLK)



Royal Blue
(BLU)



DMS770

770mm rectangular
desk mounted screen
W770 x H400



DMS970

970mm rectangular
desk mounted screen
W970 x H400



DMS1170

1170mm rectangular
desk mounted screen
W1170 x H400



DMS1370

1370mm rectangular
desk mounted screen
W1370 x H400



DMS1570

1570mm rectangular
desk mounted screen
W1570 x H400



DMS1770

1770mm rectangular
desk mounted screen
W1770 x H400



LP

Two, three and four
way linking post
W30 x D30 x H400



Desk Mounted Screens

VIRUS SHIELD



SF Acrylic Feet



VSA Surface Mounted Bracket



VSB 'G' Clamp (Single Desk)



VSC 'G' Clamp (Back to Back Desk)

Additional Notes

Clear 8mm Thick, 600mm High Acrylic

Protects Against Coughs & Sneezes

Easy to Clean & Manage

Brackets to Fit Any Desktop

Keep Existing Office Layout

Curved Edges with a Smooth Finish

For Use Across All Desking Ranges

Available Finish



Clear Acrylic
(ACR)



VS800

785mm acrylic desk mounted Virus Shield
W785 x H600

VS1200

1195mm acrylic desk mounted Virus Shield
W1195 x H600

VS1400

1395mm acrylic desk mounted Virus Shield
W1395 x H600

VS1600

1595mm acrylic desk mounted Virus Shield
W1595 x H600

VS1800

1795mm acrylic desk mounted Virus Shield
W1795 x H600



SF

Pair of free standing acrylic feet
W120 x D68 x H100



VSA

Pair of surface mounted brackets (incl. fixings)
W33 x D42 x H59



VSB / VSC

Pair of 'G' clamps for single / back to back desks
W33/71 x D44 x H92/90

BOARDROOM & MEETING

conference, meeting and storage solutions designed to cater for all areas of your business



Boardroom & Meeting

FLIPTOP TABLES



Additional Notes

Rectangular 25mm Tops with 3mm ABS Edging

Locks Tightly in Flat / Table Down Position

Frame Only Options Available

Smooth & Simple Wireline Control Mechanism

Locking Castors as Standard



Pull Lever Operation



Linking Clips Included

Available Top Finishes



Beech
(B)



Light Oak
(LO)



White
(W)



FTT120-FRAME
1120mm fliptop frame
(incl. linking clips)
W1120 x D585 x H725



FTT160-FRAME
1420mm fliptop frame
(incl. linking clips)
W1420 x D585 x H725



FTT120
1.2m rectangular fliptop
table with frame
W1200 x D800 x H750



FTT160
1.6m rectangular fliptop
table with frame
W1600 x D800 x H750

Boardroom & Meeting

BOARDROOM & MEETING TABLES



Additional Notes

Credenza Supplied with Keys & Adj. Shelves

Soft Closing Hinges to All Doors

Brushed Metal 'D' Handles

25 - 36mm Table Tops with Slab Legs

BDT360 & 400 Tops Supplied in Halves

Solid Modesty, Leg and Back Panels

Levelling Feet as Standard

Metal to Metal Fixings Throughout

Boardroom Seating Available

Available Top Finishes



Beech
(B)



Light Oak
(LO)



BDT1680

1.6m meeting table
with 60mm tubular legs
W1600 x D800 x H730

BDT200

2.0m meeting table
with metal underframe
W2000 x D1000 x H730

RT100

1.0m diameter meeting
table with 25mm top
D1000 x H730

RT120

1.2m diameter meeting
table with 25mm top
D1200 x H730

BDT240

2.4m boardroom table
with 25mm top
W2400 x D1200 x H730

BDT360

3.6m boardroom table
with 36mm top
W3600 x D1200 x H730

BDT400

4.0m boardroom table
with 36mm top
W4000 x D1200 x H730

CRED180

1.8m four door credenza
storage unit
W1800 x D450 x H730

Boardroom & Meeting

WHITE BOARDROOM & MEETING TABLES



Additional Notes

White 25mm Tops with 3mm ABS Edging

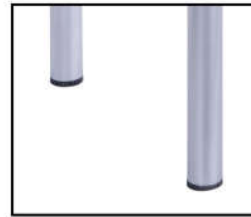
Levelling Feet as Standard

Metal to Metal Fixings Throughout

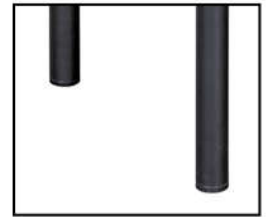
60mm Silver or Black Tubular Legs (OI-BDT1680)

25mm Arrowhead Base to Round Table

Oval Boardroom with Brushed Metal Legs on Glides

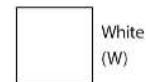


Silver OI-BDT Leg



Black OI-BDT Leg

Available Finishes



White
(W)



OI-BDT240

2.4m oval boardroom table
with brushed metal legs
W2400 x D1200 x H730

OI-BDT1680

1.6m rectangular meeting table
with 60mm tubular legs
W1600 x D800 x H730

OI-RT120

1.2m circular table with
an arrowhead base
D1200 x H730

STORAGE & DISPLAY

conduct your business with a clear mind and office
with our diverse selection of storage solutions

Storage & Display

BOOKCASES & CUPBOARDS



Additional Notes

Lockable & Supplied with Two Hinged Keys

Solid 18mm Back & Side Panels

Soft Closing Hinges to All Doors

Levelling Feet to all Units

Metal to Metal Fixings Throughout

Silver Metal 'D' Handles

Adjustable Shelving on Interlocking Pins

Available Top Finishes



Beech
(B)



Light Oak
(LO)



BC730

Desk high bookcase with one adjustable shelf
W800 x D360 x H730



BC12

1.2m bookcase with two adjustable shelves
W800 x D360 x H1200



BC18

1.8m bookcase with four adjustable shelves
W800 x D360 x H1800



BC/SC18

1.8m combination cupboard with three adjustable shelves
W800 x D450 x H1800



SC730

Desk high cupboard with one adjustable shelf
W800 x D450 x H730



SC12

1.2m cupboard with two adjustable shelves
W800 x D450 x H1200



SC18

1.8m cupboard with four adjustable shelves
W800 x D450 x H1800

Storage & Display

WHITE CUPBOARDS



Additional Notes

Lockable & Supplied with Two Hinged Keys

Solid 18mm Back & Side Panels

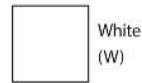
Levelling Feet to all Units

Metal to Metal Fixings Throughout

Silver Metal 'D' Handles

Adjustable Shelving on Interlocking Pins

Available Finishes



OI-SC730

Desk high White cupboard
with one adjustable shelf
W800 x D450 x H730

OI-SC12

1.2m White cupboard with
two adjustable shelves
W1000 x D450 x H1200

OI-SC20

2m White cupboard with
five adjustable shelves
W1000 x D450 x H2000

Storage & Display

FILING CABINETS



Additional Notes

Lockable & Supplied with Two Hinged Keys

Ball-Bearing Runners to All Drawers

Anti-tilt System as Standard

Allows for A4 and Foolscap Filing

Silver Metal 'D' Handles

Adjustable Filing Bars Included (All Drawers)

Available Finishes



Beech
(B)



Light Oak
(LO)



White
(W)



FC2D

Two drawer anti-tilt filing cabinet

W474 x D625 x H730



FC3D

Three drawer anti-tilt filing cabinet

W474 x D625 x H1014



FC4D

Four drawer anti-tilt filing cabinet

W474 x D625 x H1298

Storage & Display

TAMBOUR CABINETS



Additional Notes

- Lockable & Supplied with Two Hinged Keys
- Solid 18mm Back & Side Panels
- Roller Door Operation
- Metal to Metal Fixings Throughout
- Silver Metal Curved Handles
- Adjustable Shelving on Interlocking Pins
- Shelves & Pull-Out Filing Cradles Sold Separately

Available Top Finishes



TC730

Desk high tambour cabinet
with one adjustable shelf
W800 x D600 x H730



TC12

1.2m high tambour cabinet
(internals sold separately)
W1060 x D600 x H1200



TC20

2m high tambour cabinet
(internals sold separately)
W1060 x D600 x H2000



TCS

25mm tambour cabinet
shelf
W860 x D500 x H25



PFC

Tambour pull-out filing
cradle (does not fit TC730)
W860 x D415 x H85



RECEPTION FURNITURE

leave a long lasting impression with our range of reception counters, seating & glass coffee tables



Reception Furniture

'L' SHAPED COUNTERS



Anthracite Finish



Beech Finish

Additional Notes

Left or Right Unit with Universal Legs

Levelling Feet as Standard

Brushed Metal Shelf Poles

Corner Glass Shelf Included

Front Facing Silver Kickplate

Two Silver Ports to Work Area

Pedestals & Storage Available

Dimensions

Main Section - W1600 x D800 x H730 - 1160

Glass Section - W800 x D800 x H730 - 935

Return Section - W800 x D800 x H730

Available Finishes



Anthracite
(AN)



American Black
Walnut (ABW)



Beech
(B)



Light Oak
(LO)

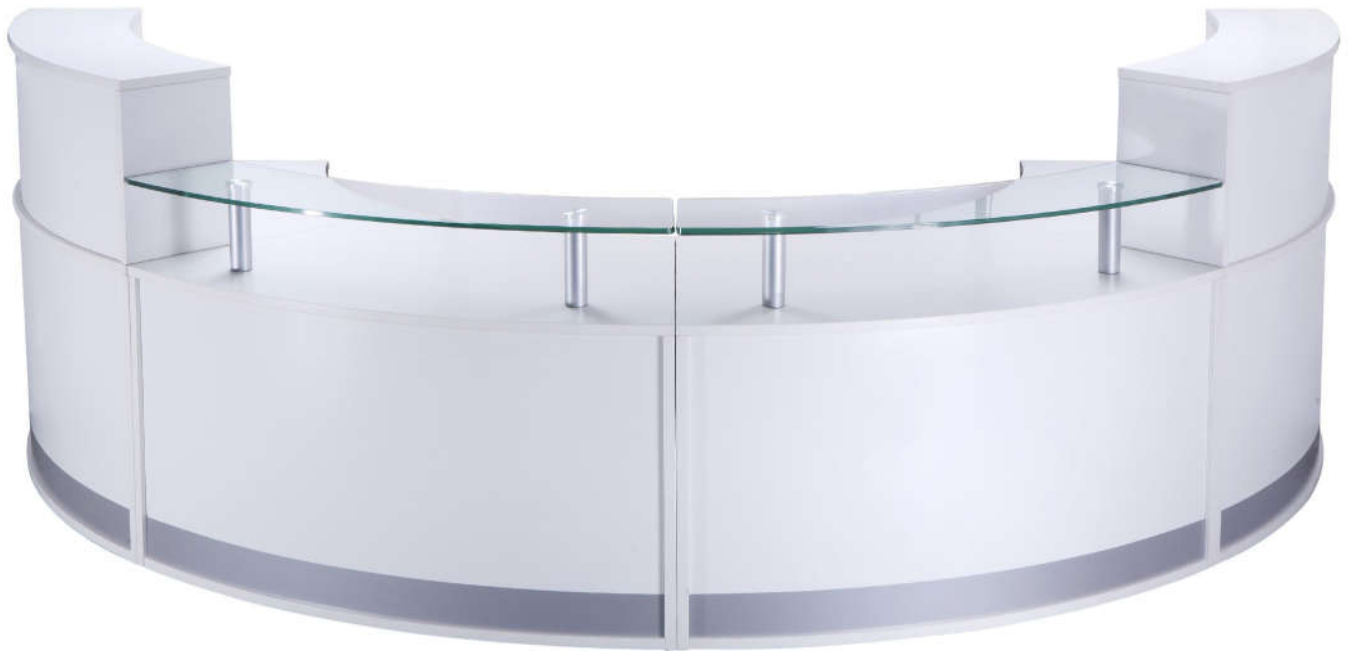


NCT1160

Three section 'L' shaped reception counter with glass & kickplate
W2400 x D1600 x H730 - 1160

Reception Furniture

CURVED MODULAR COUNTERS



Two Section Example (FHR, LHR)



Three Section Example (LHR, FHR, LHR)

Additional Notes

Two Components with Many Configurations

Fixing Plates Included

Front Facing Silver Kickplate

Levelling Feet to Both Units

Glass Shelf Included (LHR)

Brushed Metal Shelf Posts (LHR)

Two Silver Ports to Work Area (FHR)

Metal to Metal Fixings Throughout

Available Finishes



Anthracite
(AN)



American Black
Walnut (ABW)



White
(W)



FHR

High curved modular reception
unit (single section)
W1339 x D872 x H730 - 1160



LHR

Low curved modular reception unit
with glass shelf (single section)
W1339 x D872 x H730 - 953

Reception Furniture

WHITE GLOSS COUNTERS



Additional Notes

Free Standing Gloss Reception Counter

12mm Tempered Glass on Chrome Risers

Two Silver Ports to Work Area

Universal Return Allows Unit to be Left or Right

Levelling Feet as Standard

Fixing Plates Included (URU1060)

Metal to Metal Fixings Throughout

Available Finish



Gloss White
(GW)



HGC2280

Gloss White reception counter
(main section only)

W2200 x D800 x H730 - 1130

URU1060

Return unit for Gloss White
reception counter

W1000 x D600 x H730

Reception Furniture

GLASS COFFEE TABLES



Additional Notes

15mm Tempered Glass to All Coffee Tables

Three Varying Unique Shapes / Styles

Resting Glass Top Design

Minimal Assembly Required

Base Available in Black Only

Reception Seating Available



FA-312
Unique design glass coffee
table with Black base
W1250 x D900 x H390



CCT
1.0m circular glass coffee
table with Black base
D1000 x H360



RNT
1.0m rectangular glass coffee
table with Black base
W1000 x D850 x H390

Reception Furniture

CHAIRS & SOFAS



Additional Notes

Matching One, Two & Three Seater Korby Sofas

Chromed Metal Tubular Frame & Legs

Black Faux Leather Throughout

Metal Underframe with Central Legs

Removable Seat Cushions (SJ)

Universal Corner Section (CSS)

Joining Clips Included (CSS & MSS)

Available Finish



Black Faux
Leather (BLK)

SJ009-1

Single seat Korby sofa
in Black faux leather
W900 x D730 x H700



SJ009-2

Two seater Korby sofa
in Black faux leather
W1430 x D730 x H700



SJ009-3

Three seater Korby sofa
in Black faux leather
W2000 x D730 x H700



CSS

Corner section modular
sofa in Black faux leather
W750 x D750 x H720



MSS

Mid section modular sofa
in Black faux leather
W555 x D750 x H720



TUB001-1

Single seat tub chair in
Black faux leather
W750 x D600 x H760



CHAIRS & SEATING

a stylish selection of ergonomic, operator & meeting chairs
coupled with unrivalled aesthetics and comfort



Ergonomic Seating

FERCULA



Additional Notes

- Executive 325mm Headrest (optional)
- 'Wishbone' Frame Back Detail
- Premium Customised Italian Mesh Back
- Revolutionary Rotary-Synchro Back
- Ultra Soft Omnidirectional TPE Lumbar
- Wireline Control Mechanism
- Integrated Operating Levers
- Four Position Lock & Tilt with Tension
- Seat Slide Function
- Colour Coordinated Soft PU 4D Arms
- KGS Class 4 Gas Lift
- Black / Grey FR Injection Foam Seat Pad
- 24 Hour Usage Rating

Dimensions

- | | |
|---------------------|--------------------|
| Seat W: 500mm | Back W: 485mm |
| Seat D: 620 - 650mm | Back H: 575mm |
| Seat H: 435 - 500mm | Arm H: 625 - 695mm |



FERCULA

High back mesh task chair in Black or White (without headrest)
W680 x D620 - 650 x H1010 - 1075



FERCULA-HR

325mm Executive headrest only for Fercula chair
W680 x D620 - 650 x H1010 - 1075

Ergonomic Seating

THE DORSUM



Additional Notes

- Extra Large 370mm 'Executive' Headrest
- Height Adjustable Ratchet Back
- Adjustable Lumbar Support
- Full Diamond Mesh Throughout
- Soft PU 3D Arms with Chromed Trim
- Side Pictorial Mechanism Levers
- Multi Position Tilt Lock with Tension
- Seat Slide Function
- Waterfall Airflow Seat
- Wireline Control Mechanism
- Heavy Duty SHS Gas Lift
- 700mm Aluminium Base with PU castors
- 24 Hour Usage Rating

Dimensions

- | | |
|---------------------|--------------------|
| Seat W: 505mm | Back W: 520mm |
| Seat D: 430 - 480mm | Back H: 560mm |
| Seat H: 480 - 565mm | Arm H: 640 - 795mm |



DORSUM

High back ergonomic mesh chair
with extra wide headrest
W710 x D700 x H1180 - 1270

Ergonomic Seating

TENMC & TENMC-H



Additional Notes

- Extra Large 'Executive' Headrest (optional)
- Adjustable Lumbar Support
- Durable Wintex Mesh Back
- Extra Soft PU 3D Arms
- UK FR Injection Foam Seat Pad
- Multi Position Tilt Lock with Tension
- Seat Slide Function
- Waterfall Airflow Seat
- Triple Lever Mechanism
- KGS Class 4 Gas Lift
- GF Shell with Black Nylon Base & Castors

Dimensions

- | | |
|---------------------|--------------------|
| Seat W: 510mm | Back W: 515mm |
| Seat D: 450 - 500mm | Back H: 570mm |
| Seat H: 475 - 570mm | Arm H: 665 - 820mm |



TENMC

High back ergonomic mesh chair
(without headrest)

W675 x D710 x H990 - 1180



TENMC-HR

Extra large Executive headrest
only for TENMC chair

W675 x D710 x H1180 - 1275

Mesh Seating

THE NMC



Additional Notes

Height Adjustable & Pivoting Headrest

Cushioned Airflow Mesh Seat

Nylon Shell & Base with Black Castors

Gas Lift as Standard

Height Adjustable Soft PU Arms

Multi-tilt Lock with Tension Control

Adjustable Lumbar Support

Only Available in Black Mesh Fabric

Dimensions

Seat W: 520mm

Back W: 490mm

Seat D: 500mm

Back H: 520mm

Seat H: 500 - 585mm

Arm H: 700 - 785mm



Height Adjustable Pivoting Headrest



Adjustable Lumbar Support



NMC

High back mesh operators chair
with adjustable headrest

W575 x D600 x H1020 - 1105

Mesh Seating

EXEC-OP & SPINE



Additional Notes

Cushioned Airflow Mesh Seat with Mesh Back

Complete with Mesh Headrest

Gas Lift as Standard

90° Pivoting / Fold Back Arms

Soft Foam & Faux Leather Armpads

Tilt Lock with Tension Control

Chrome Detailed & Black Nylon Base

Only Available in Black Mesh Fabric

Dimensions

Seat W: 520mm

Back W: 505mm

Seat D: 500mm

Back H: 575mm

Seat H: 450 - 550mm

Arm H: 650 - 750mm



EXEC-OP

Executive high back mesh operators chair with headrest

W690 x D690 x H1210 - 1310

Additional Notes

Padded Mesh Seat with Faux Leather Trim

Unique 'Spinal' Back Detail

Tilt Lock with Tension Control

Gas Lift as Standard

Height Adjustable Arms

Foam & Fabric Faux Leather Arm Rests

Twin Lever Control Mechanism

Only Available in Black Mesh Fabric

Dimensions

Seat W: 520mm

Back W: 530mm

Seat D: 540mm

Back H: 560mm

Seat H: 535 - 635mm

Arm H: 735 - 835mm



SPINE

High back mesh operators chair with spine detail

W680 x D720 x H1080 - 1180



Mesh Seating

MESH-OP



Additional Notes

Cushioned Airflow Mesh Seat with Mesh Back

Nylon Shell & Base with Black Castors

Gas Lift as Standard

90° Pivoting / Fold-back Arms

Soft Foam & Faux Leather Armpads

Tilt Lock with Tension Control

Only Available in Black Mesh Fabric

Dimensions

Seat W: 490mm

Back W: 505mm

Seat D: 525mm

Back H: 575mm

Seat H: 450 - 550mm

Arm H: 700 - 800mm



MESH-OP BLACK

High back mesh operator chair
in Black with Black shell
W690 x D755 x H960 - 1060



MESH-OP GREY

High back mesh operator chair
in Grey with Black shell
W690 x D755 x H960 - 1060



MESH-OP WHITE

High back mesh operator chair
in Black with White shell
W690 x D755 x H960 - 1060

Executive Seating

BC1260 & BC1261



Additional Notes

Aluminium Five Star Base & Heavy Duty Castors

Free-flow Tension Control Mechanism

Gas Lift as Standard

Pivoting Soft PU Arm Pads

Height Adjustable Arms

Multi-position Tilt Lock

Only Available in Black Faux Leather

Dimensions

Seat W: 520mm

Back W: 520mm

Seat D: 540mm

Back H: 710mm

Seat H: 450 - 530mm

Arm H: 610 - 690mm



BC1260

Executive high back chair
in Black faux leather

W660 x D670 x H1160 - 1260

Additional Notes

High Comfort Cushioned Seat & Back Pads

Chrome Cantilever Frame

Foam & Faux Leather Fabric Arm Rests

Nylon Anti-tilt Feet

Two Piece Installation

Only Available in Black Faux Leather

Boardroom Tables Available

Dimensions

Seat W: 500mm

Back W: 510mm

Seat D: 490mm

Back H: 560mm

Seat H: 460mm

Arm H: 670mm



BC1261

Executive high back meeting
chair in Black faux leather

W575 x D600 x H1020



Meeting Seating

THE CANTÈ



Sculpted Lumbar Support



Concealed / Capped Arm Fixings



Additional Notes

Chrome Cantilever Frame

High Density FR Foam Seat

Sculpted Back Support

Black Faux Leather Throughout

Concealed / Capped Arm Fixings

Faux Leather & PU Armrests

Anti-tilt Stabilising Frame Feet

Two Piece Installation

Dimensions

Seat W: 480mm Back W: 500mm

Seat D: 450mm Back H: 400mm

Seat H: 460mm Arm H: 645mm



CANTÈ

High back meeting / visitor chair in Black faux leather
W580 x D585 x H850

Mesh Seating

VISITOR & MEETING CHAIRS



Additional Notes

Cushioned Airflow Mesh Seat with Mesh Back

Chromed Cantilever Frame

Black Nylon Shell

90° Pivoting / Fold-back Arms

Soft Foam & Faux Leather Armpads

Anti-tilt Feet Pre-fitted

Only Available in Black Mesh Fabric

Dimensions

Seat W: 530mm	Back W: 505mm
Seat D: 500mm	Back H: 575mm
Seat H: 450mm	Arm H: 695mm



MESH-OP VIS

High back mesh meeting chair with cantilever frame
W650 x D570 x H990

Additional Notes

Cushioned Mesh Fabric Seat

Chromed Cantilever Frame

Perforated Flexi Nylon Back

Anti-tilt Feet Pre-fitted

Only Available in Black

Dimensions

Seat W: 460mm	Back W: 460mm
Seat D: 470mm	Back H: 250mm
Seat H: 460mm	Arm H: 655mm



VISA

Medium back meeting chair with cantilever frame
W530 x D610 x H825

Multi Purpose Seating

THE VERSE



Additional Notes

Unique 'Crosshatch' Back Detail

Chromed Metal Skid Base Frame

Three Piece Assembly, No Tools Required

Linking Feet As Standard (Pre-Fitted)

Recommended Stacking Height - 10

Foam & Fabric Black Seat Pad (PSC-PAD)

Dimensions

Seat W: 430mm

Back W: 445mm

Seat D: 475mm

Back H: 390mm

Seat H: 460mm

Available Shell Colours



Black
(BLK)



Grey
(G)



White
(W)



PSC

Multi-purpose Plain shell
Verse chair (no seat pad)
W510 x D555 x H805



PSC-PAD

Multi-purpose Verse chair
with seat pad (excl. Black)
W510 x D555 x H805



PSC-STOOL

Plain shell verse stool in Grey
or White
W510 x D600 x H1100

Endurance Seating

TWIN LEVER TY2



Additional Notes

Sculpted Backrest Provides Additional Support

Gas Lift as Standard

Any Position Tilt Lock Mechanism

FR Foam & Fabric Seat and Back Pads

Black Nylon Base with Hooded Castors

Allows Back Tension Adjustments

Height Adj. & Fixed Arms Sold Separately

Dimensions

Seat W: 480mm

Back W: 475mm

Seat D: 460mm

Back H: 550mm

Seat H: 435-545mm

Available Fabric Colours



Jet Black
(BLK)



Royal Blue
(BLU)



TY2

Twin lever fabric operator chair
(arms sold separately)

W600 x D600 x H980 - 1090



FA

Pair of fixed arms for
TY2 operator chair



HA

Pair of height adj. arms
for TY2 operator chair

Endurance Seating

STACKING CHAIRS



Additional Notes

Polypropylene Shell with Textured Finish

Chromed Metal Frame

No Assembly Required

Recommended Stacking Height 10

Available Shell Colours



Carbon
(CAR)



Cobalt
(COB)



Lemon
(LEM)



Lime
(LIM)



Mist
(M)



Rose
(R)



POLY

Medium back polyprop
stacking chair

W510 x D555 x H805

Additional Notes

FR Foam & Fabric Seat and Back Pads

1.2mm Gauge Black Steel Frame

Recommended Stack Height 10

No Assembly Required

Stacking Chair Trolley Available

Available Fabric Colours



Carbon
(CAR)



Cobalt
(COB)



OI-FLIP

Medium back stacking chair
with Black metal frame

W535 x D550 x H830



